

I-MED Online 2.0 Support page for launching IntelViewer

I don't have IntelViewer installed. How do I get it?

If you don't have IntelViewer already installed on your desktop, you will need to download it first and accept Intelrad's Terms & Conditions.

Step 1: Click on one of the links below to open IntelViewer

Victoria: <https://bit.ly/2sjg0kO> - click "MIA Direct Installers"

NSW/ACT: <https://bit.ly/2kvNIAj> - click "I- MED Online IntelViewer"

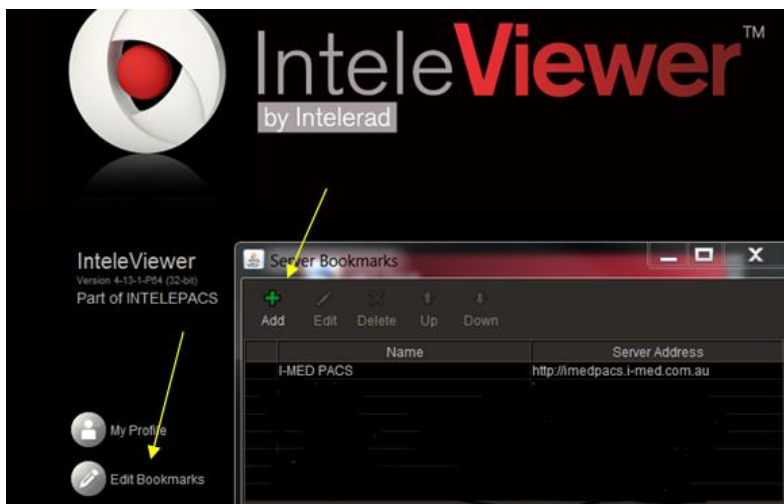
Step 2: Download IntelViewer

Step 3: Install Intelviewer

Step 4: Add bookmark if prompted:

Edit Bookmarks

Click +Add and copy and paste URL: <https://pacs.i-med.com.au>



Step 5: Log in to IntelViewer with your user details

(Continued over)

Step 6: Accept Intelrad Terms & Conditions (click on link to IntelBrowser)



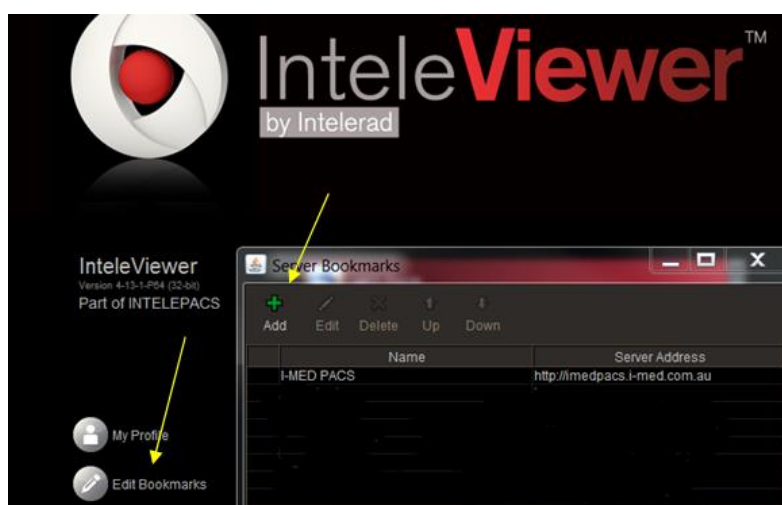
Step 7: Log out and launch IntelViewer from I-Med Online 2.0

<https://portal.i-med.com.au>

I already have IntelViewer installed. How do I get it to work?

Step 1: Log in to IntelViewer

Step 2: Add I-MED Bookmark:
Edit Bookmarks
Click +Add and copy and paste URL: <https://pacs.i-med.com.au>



Step 3: Accept Intelrad Terms & Conditions (click on IntelBrowser)



Step 4: Log out and launch IntelViewer from I-Med Online 2.0

<https://portal.i-med.com.au>

For any further support you may need, please contact our dedicated support team:

- **1300 147 852** telephone support (weekday business hours)
- Desktop Online **Chat** (weekday business hours)
- **Email:** onlinesupport@i-med.com.au